

Design Your Own Fairy Chest

⚠ WARNING:
CHOKING HAZARD – Small parts.
Not for Children under 3 years.

A. SAFETY MESSAGES

1. Please carefully read these instructions before you start.
2. Adult assistance and supervision are recommended.
3. Intended for children of ages 8 and up.
4. This kit and its finished product contain small parts which may cause choking if misused. Keep away from children under 3 years old.
5. Scissors required (not included). Adult supervision when using scissors.
6. Do not place the material in mouth. Do not apply the magic transfer sheet to skin.

B. OTHER REMARKS

1. Always work on a solid, level working surface and try to keep the area neat and clean.
2. If clothes are stained by paint then wash them immediately. Dried paint may leave mild stains on clothing even when they are washed. Put on an apron or wear old working clothes as necessary.

C. CONTENTS

1 wooden mirror chest (12 x 9 x 13cm), 1 mirror, 1 magic transfer sheet, 1 double adhesive foam tape, 1 paint strip, 1 paint brush, 1 dabber and detailed instructions.

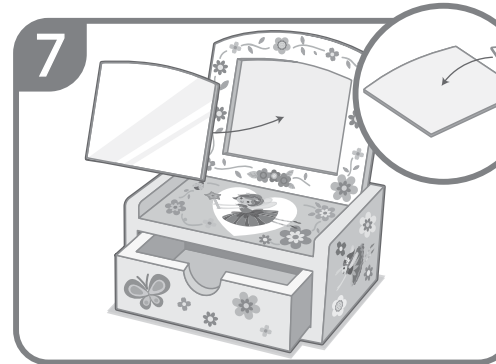
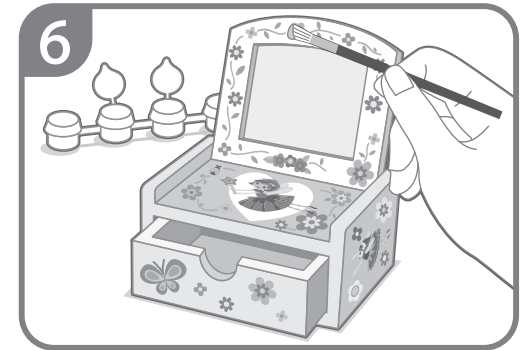
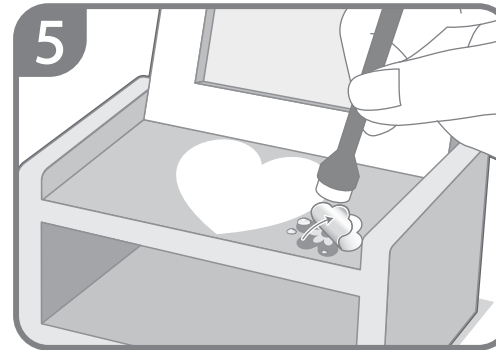
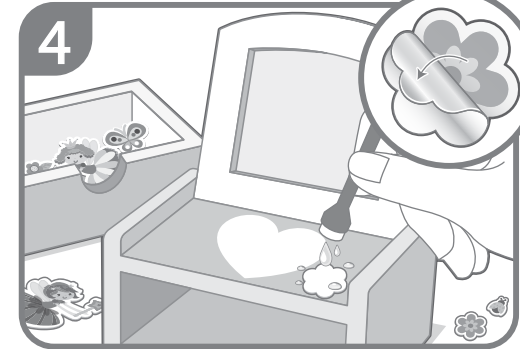
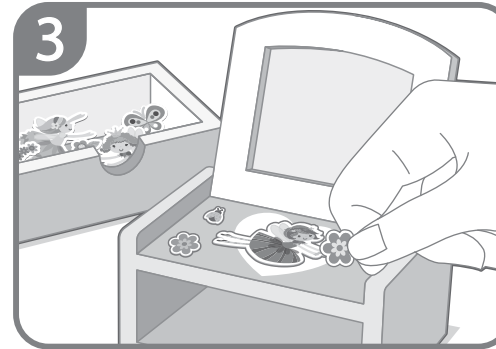
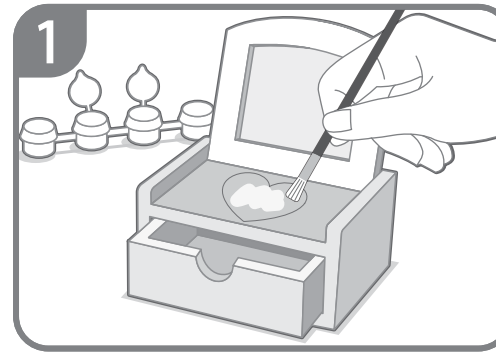
D. INSTRUCTIONS

1. Design and paint your mirror chest with the colour paints provided. Section E guides you how to produce more colours. Afterwards, leave the chest to dry completely. Tips: Use various colours for different panels since one single colour might not be enough for the entire chest. Lighter backgrounds usually have better results with the applied Magic Transfer.
2. Take the Magic Transfer Sheet. Do not peel off the transparent film yet. Use scissors (from home) to cut out the individual graphics. You may keep the cut pieces in the drawer.
3. Design how you want to arrange the transfers on the chest. Be aware that they will be flipped horizontally after applied.
4. The magic transfers have to be applied one after one. Try to apply smaller transfers first which are easier. Leave one target transfer on the designated area, and remove the neighbouring ones. To apply, peel off the transparent film. Place it onto the chest surface with the white back paper facing up. Moisten the dabber with water and use it to dampen the back paper.
5. When the back paper is dampened thoroughly, let it set for 30 seconds. Use the dabber to gently slide the back paper off the magic transfer. Repeat Steps 4-5 to apply the remaining transfers onto the chest.
6. Use paints and paintbrush to add more decorations and highlights to the chest.
7. Stick the mirror into place with the foam tape provided. Your mirror chest is finished.

E. COLOUR MIXING GUIDE AND PAINTING TIPS

Follow the colour mixing guide below to produce additional colours. Some of the following options may not apply if your kit does not contain the necessary colours.

| | | | | | |
|-----------|---------|--------|-------------------|----------|-----------------------|
| Pink | = White | + Red | Green | = Yellow | + Blue |
| Purple | = Red | + Blue | Orange | = Yellow | + Red |
| Sky Blue | = White | + Blue | Lime Green | = Yellow | + a little Blue |
| Turquoise | = White | + Blue | + a little Yellow | Brown | = Yellow |
| | | | | | + a little Blue + Red |



QUESTIONS AND COMMENTS

We treasure you as a customer and your satisfaction with this product is important to us. In case you have any comments or questions, or you find any parts of this kit missing or defective, please do not hesitate to contact our distributor in your country, whose address is printed on the package. You are also welcome to contact our marketing support team at Email: infodesk@4M-IND.com, Fax (852) 25911566, Tel (852) 28936241, Web site: WWW.4M-IND.COM